



**OUTDOOR
REVOLUTION**

WWW.OUTDOOR-REVOLUTION.COM



Caravan Awnings & Accessories - 2017

Without Question, The Best Lightweight Awnings for 2017...



Outdoor Revolution has created the ultimate, most innovative and reliable products for 2017 to ensure the very best experience of the great outdoors. Established in 2003, Outdoor Revolution is the pioneering brand of the lightweight caravan awning and have continually led the market with technological advances to maintain the status as the most aspirational manufacturer in the caravan awning industry. The range for 2017 has taken the very best features of our archived blue prints, to design, manufacture and provide the most aspirational products on the market, whilst offering unequalled value for money...

...Do not settle for second best!

The image shows the 'OUTDOOR REVOLUTION' logo in a bold, green, 3D-style font. Below the logo, the website address 'WWW.OUTDOOR-REVOLUTION.COM' is written in a smaller, white, sans-serif font. The background is a dark, textured surface, possibly a car's bodywork, with some light reflecting off it.

Designed in the UK for the UK...

Our design team have created the most reliable, easy to erect and luxurious products on the market; to echo the changes in outdoor living and our consumer's expectations.

Our mission was simply to create the most desired range of Caravan Awnings using only the very best fabrics and component parts available.

In our 14 years, we have led the market and continued to evolve our signature designs to ensure we have the most aspirational product available.

Outdoor Revolution hasn't just created awnings, we have created unique, versatile and flexible additional space for caravanners to enjoy their leisure time.

Often copied, but never equalled...

...buy from the innovators, not the imitators!

As the Pioneers and Innovators within this field, **Outdoor Revolution** are so confident in the reliability of product with an Intelligent Frame that we offer a ***LIFETIME GUARANTEE** on the Air Tube with an IF Valve...

Inspiral frames & Dura-tech welded products now carry a *3 year tube warranty.

2017 Product Range Index		
CARAVAN AWNINGS		
Technology & Fabrics	4-5	
Esprit Awnings	6 - 13	
Esprit 420 Pro	8 - 9	
Esprit Tall Annexe	10	
Esprit 420	11	
Esprit 360 Pro	12	
Esprit 360	13	
Elan Porch Awnings	14-17	
Elan 280	16	
Elan 340	17	
Europa Awnings	18-23	
Europa 380 Pro	20	
Europa 380	21	
Europa 380 Climate	22	
Europa Tall Annexe	23	
Sport-Air Awnings	24-28	
Sport-Air 325	26	
Sport-Air 400	27	
Sport-Air Annexe	28	
ACCESSORIES		
Accessories	29-39	
Furniture	30-31	
Trio Sleeping Bags	32	
Pegging & Guying	33	
Inflation Air Pumps	34-35	
Breathable Carpets	35	
Windbreaks	36	
Caravan Covers / Big Loo	37	
Blue Diamond Accessories - Pegs / Caravan Care / Sanitation Products	38-39	

Why buy an Outdoor Revolution Product?

Following the success of 2016 and in line with our ambitions and ethos, we are determined to continue our mission to create market leading technology with parities in regard to quality; we have dedicated lines of manufacture to ensure consistency of expertise, exceptional quality control processes, combined with an offer of unequalled value for money. We have the most reliable inflation system on the market and best weather proof and fade resistant fabrics. We have introduced some exciting new additions to the current line-up of features, affording true, stand-out products and a must-have brand for the end-user.

Oxygen Air Frame

The EXCLUSIVE Oxygen Air Frame is the quickest, easiest and most reliable inflation system on the market, with no ugly adjoining pipes or taps spoiling the clean lines of our beautiful, simplistic designs. The Oxygen Air Frame incorporates the Dynamic Speed Valve and the patented Intelligent Frame Relief Valve. Inflation is an incredibly speedy process with the dual action pump provided; deflation is just the push of a button. We are the only awning manufacturer to use the Relief Valve, preventing damage to the tube by expelling any excess air, which can be caused by either over inflation or increases in the ambient temperature. The valves are discretely concealed by a Velcro cover.

Condensation Explained

Condensation is a completely natural occurrence which happens when warm air meets cold surfaces forming little water droplets usually on the inside of the fabric; like you may experience on windows at home. An average adults' breath produces 1 litre of water vapour every day which is released into the air; therefore having numerous people sleeping inside will produce a vast amount of water vapour in the air that will condensate. All Outdoor Revolution products are protected with a durable water repellent treatment and all seams are heat sealed. This process prevents water ingress, but can also prevent the moisture trapped in the air inside from escaping, causing condensation. To help ease condensation, we have put air vents on every product and mesh screens on doors, as well as dual zip windows and doors; maximising air flow. We would also recommend taking a micro breathable travel towel to wipe the roof or walls of the product if condensation appears, to speed up the drying process.

Pioneering Technology

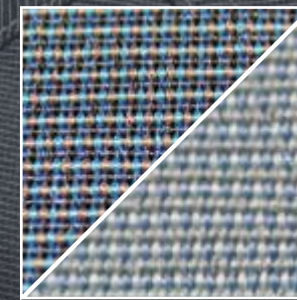
Pheonix mesh. is an assisted-healing 'smart' material that has the structurally incorporated ability to repair 'snag' damage caused by usage over time. We have taken the inspiration from biological systems, which have the ability to heal after being injured. When simply manipulated, the mesh will return to its original form.

Dura-tech. welded technology - due to the success of the welded single inflation point, this technology will be expanded in to additional products; providing the most efficient and simple technology on the market. This carries a 3 year tube warranty.

UV Covers. reversible protective roof covers that protect the products fabrics from the harmful rays of the sun, tree sap and bird lime, whilst dramatically reducing condensation by producing a layer of air between the roof and the cover. The reversibility works to either reflect heat or retain heat within the product.

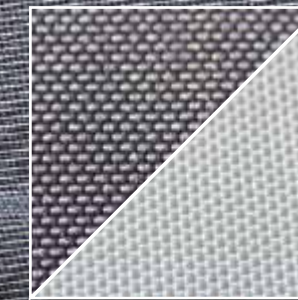


Pro.800^{HD}



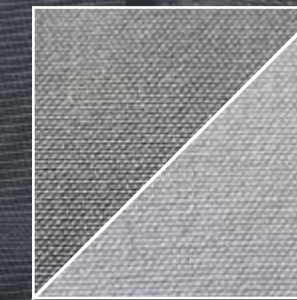
This luxurious 800 High-Density yarn dyed woven fabric is an advanced weave of ultra-fine polyester fibres. It provides an excellent balance between the usability of man made and the tactility of natural fabrics. 800HD performs better than much heavier denier fabrics but provides weight and space saving benefits due to the innovative weave. The material also supports subtle deep colouring to create a sense of refined elegance. This fabric is an exclusive development and cooperation with our premium fabric supplier. Outdoor Revolution's premium range again further enhanced and peerless amongst our competition.

600^{HD}



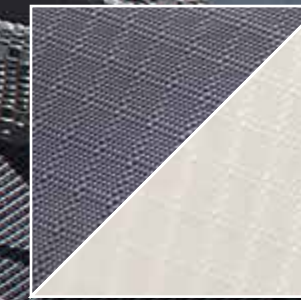
This 600 high-density oxford weave material gives the look and feel of a traditional awning, whilst maintaining all of the benefits of Outdoor Revolution's signature lightweight awnings. The special technical weave by nature of the construction of this material gives the look and feel of canvas, with the outstanding performance of this modern technically advanced fabric. Another first for Outdoor Revolution.

Pro.Climate.



Climate Fabric incorporates years of learning to provide a high performing man made fibre with the breathability of polycotton. This superior fabric provides the ultimate performance of any awning fabric, marrying the water repellent properties of polyester with the comfort of natural fibres. We are the first commercial manufacturer to introduce this fabric. Another first for Outdoor Revolution.

150^{HD} drs Endurance.



This exceptional High Density fabric is used by Outdoor Revolution on product where weight, pack size and speed is of the essence. The 150 High Density fabric gives unparalleled benefits, in terms of strength to volume and weight. The engineered double rip-stop gives a contemporary look and feel, as well as providing the user with unequalled performance from similar weight fabrics.



Esprit ...the spirit of caravanning

Esprit Traditional fabric air awning in two size & fabric options...

The familiar clean design lines of the 'All New' Esprit are born of Outdoor Revolution's rich heritage of lightweight awnings. This is the 6th generation of the famed Compactalite range which has evolved into the ultimate Air Framed awning; utilising our signature styling and combining the features & flexibility as always provided with ground breaking new 'traditional feel' fabrics and the quickest and easiest inflation system on the market.



Esprit 420 Pro

Quite simply the best single inflation point caravan air awning on the market; ideal for families, with the ability to zip on a tall annexe on either side for additional sleeping or storage space.



Esprit 360 Pro

The smaller version of the 420; ideal for families, the Esprit 360 Pro provides incredible flexibility, and superb additional living space.



Esprit 420

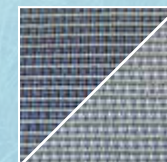
Superb styling with Outdoor Revolution's signature large windows, giving great panoramic views; ideal for families. All windows and doors can be rolled back to create a large sun shelter.



Esprit 360

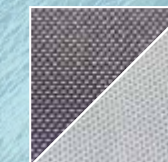
An excellent 3.6m wide awning, the Esprit 360 has the look and feel of a traditional awning, with the capacity and weight saving benefits of a typical lightweight awning.

Pro. 800^{HD}



The Esprit 420 pro and the Esprit 360 pro both utilise our premium 800 High Density yarn dyed woven fabric to give you our most luxurious, high performing awning ever. An unequalled premium fabric in every aspect in terms of looks, feel and technical performance.

600^{HD}



The Esprit 420 and the Esprit 360 utilise both our 600 High Density Oxford weave fabric to provide the feel of a traditional canvas awning, whilst maintaining all the benefits of Outdoor Revolution's signature lightweight awnings. The most outstanding, modern, technically advanced fabric; uncompromised in every way.

...The UK's '*Must Have*' Air Awning for 2017!

Esprit 420 PRO

Pro.800^{HD}



CANVAS ONLY WEIGHT
34.8kg

PREMIUM AIR AWNING // CARAVAN

“Superb design, with the most simplistic and neat inflation system on the market.”

Features:

- Fabric: **Pro.800^{HD}**
- Frame: **Dura-tech.** welded with Single Inflation Point Tube (3 YEAR TUBE WARRANTY)
- Valves: 2 Dynamic Speed Valves and an Intelligent Frame Relief Valve

Also Includes...

- Tinted Windows
- Sliding Curtains
- **Pheonix mesh.** Doors
- Heavy Duty PVC Draught Exclusion
- Draught Skirt
- Storm Straps



Model	Width	Depth	Height	Weight	Pack Size
Esprit 420 Pro	420cm	310cm	235-250cm	38.8kg	78x47x47cm

Colours - Anthracite / Platinum Grey

Optional Extras:

- Esprit 420 Air-Walk Matting (OR17359)
- Signature Treadlite (TRE17325)
- Esprit 420 Lounge Liner (OR17328)
- Esprit Tall Annexe Pro (OR17358)
- Esprit 420 Tube Kit (OR17327)
- Rear Pad Poles (POL220)
- Jet Stream Electric Pump (OR16015)
- Jet Stream Electric Twin Pump (OR17040)

“A conservatory for the side of your caravan”



Esprit Tall Annexe



AIR ANNEXE // CARAVAN

“A superb addition to the Esprit range, offering additional sleeping or storage space.”


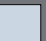
Features:

- Fabric: **Pro.800HD** / **600HD**
- Frame: Single Oxygen Air-Frame Tube
- Valves: Dynamic Speed Valve + Intelligent Frame Relief Valve



Also Includes...

- Rear Zip- Down Air Vent
- Cool Grey Micro Polyester Inner Tent

Model	Width	Depth	Height	Weight	Pack Size
Pro.800HD	200cm	225cm	180cm	10.2kg	73x24x24cm

Colours - Anthracite / Platinum Grey  

600HD	Width	Depth	Height	Weight	Pack Size
	200cm	225cm	180cm	11.5kg	73x24x24cm

Colours - Graphite / Ivory  



- Optional Extras:
- Trio Sleeping Bag (OR15000)
 - Trio Twin Sleeping Bag (OR15005)
 - Trio Tots Sleeping Bag (OR15010)
 - Trio Pillow (OR15014)

Esprit 420



AIR AWNING // CARAVAN

“A conservatory for the side of your caravan”

Features:

- Fabric: **600HD**
- Frame: 4 Individual Oxygen Air Frame Tubes + 3 Velcro In-Roof Support Tubes (LIFETIME GUARANTEE)
- Valves: Dynamic Speed Valves and Intelligent Frame Relief Valves

Also Includes...

- Tinted Windows
- Plain Zip-In Curtains
- **Phoenix mesh.** Doors
- Heavy Duty PVC Draught Exclusion
- Draught Skirt
- Endurance Storm Straps

Model	Width	Depth	Height	Weight	Pack Size
Esprit 420	420cm	310cm	235-250cm	33.7kg	78x47x47cm

Colours - Graphite / Ivory  



- Optional Extras:
- Esprit 420 Air-Walk Matting (OR17359)
 - Signature Treadlite (TRE17325)
 - Esprit 420 Lounge Liner (OR17328)
 - Esprit Tall Annexe (OR17330)
 - Esprit 420 Tube Kit (OR17327)
 - Rear Pad Poles (POL220)
 - Jet Stream Electric Pump (OR16015)
 - Jet Stream Electric Twin Pump (OR17040)



Esprit 360 Pro

Pro. 800^{HD}

PREMIUM AIR AWNING // CARAVAN

“Beautiful clean design lines both inside and out”

Features:

- Fabric: **Pro. 800^{HD}**
- Frame: **Dura-tech.** welded with Single Inflation Point Tube. (3 YEAR TUBE WARRANTY)
- Valves: 2 Dynamic Speed Valves and an Intelligent Frame Relief Valve.

Also Includes...

- Tinted Windows
- Sliding Curtains
- **Pheonix mesh.** Doors
- Heavy Duty PVC Draught Exclusion
- Draught Skirt
- Endurance Storm Straps

Model	Width	Depth	Height	Weight	Pack Size
Esprit 360 ^{Pro}	360cm	310cm	235-250cm	32.0kg	78x44x44cm

Colours - Anthracite / Platinum Grey

Optional Extras:

- Esprit 420 Air-Walk Matting (OR17359)
- Signature Treadlite (TRE17325)
- Esprit 420 Lounge Liner (OR17328)
- Esprit Tall Annexe Pro (OR17358)
- Esprit 420 Tube Kit (OR17327)
- Rear Pad Poles (POL220)
- Jet Stream Electric Pump (OR16015)
- Jet Stream Electric Twin Pump (OR17040)



CANVAS ONLY WEIGHT
28.3kg



Esprit 360

600^{HD}

AIR AWNING // CARAVAN

“Incredibly flexible living space”

Features:

- Fabric: **600^{HD}**
- Frame: 3 Individual Oxygen Air Frame Tubes + 2 Velcro In-Roof Support Tubes (LIFETIME GUARANTEE)
- Valves: Dynamic Speed Valves and Intelligent Frame Relief Valves

Also Includes...

- Tinted Windows
- Plain Zip-In Curtains
- **Pheonix mesh.** Doors
- Heavy Duty PVC Draught Exclusion
- Draught Skirt
- Endurance Storm Straps

Model	Width	Depth	Height	Weight	Pack Size
Esprit 360	360cm	310cm	235-250cm	28.7kg	78x44x44cm

Colours - Graphite / Ivory

Optional Extras:

- Esprit 420 Air-Walk Matting (OR17359)
- Signature Treadlite (TRE17325)
- Esprit 420 Lounge Liner (OR17328)
- Esprit Tall Annexe (OR17330)
- Esprit 420 Tube Kit (OR17327)
- Rear Pad Poles (POL220)
- Jet Stream Electric Pump (OR16015)
- Jet Stream Electric Twin Pump (OR17040)

CANVAS ONLY WEIGHT
25.1kg



NEW
FOR 2017

Elan ...something for the weekend



...speed, simplicity & elegance

Elan caravan air porch awning in two size options...

The Elan is the best single inflation point, short break caravan awning available for 2017; the two sizes have been especially selected to fit comfortably to 99% of caravans, creating the most lightweight compact and durable awning with the most efficient inflation system on the market. Additional accessories such as the Elan canopy compliment this outstanding compact awning.



Elan 280

The ideal Porch awning for couples with the design inspired by Outdoor Revolution's best-selling Porchlite, combined with the new 600 high density fabric, this product is without doubt the best small air porch on the market for 2017.



Elan 340

The perfect awing for small families or couples looking for a little more space and flexibility, the Elan 340 oozes quality from its clean design and superior features. The single tubes offers super fast, effortless inflation and pitching giving you more time on arrival to kick back and relax.

600^{HD}



The Elan 280 and the Elan 340 both utilise our 600 High Density Oxford weave fabric to provide the feel of a traditional canvas awning whilst maintaining all the benefits of Outdoor Revolution's signature lightweight awnings. The most outstanding, modern, technically advanced fabric; uncompromised in every way.

Elan 280

600^{HD}



AIR PORCH AWNING // CARAVAN

“The best small porch awning available for 2017!”

Features:

- Fabric: **600^{HD}**
- Frame: Single Oxygen Air-Frame Tube + Single Velcro In-Roof Support Tube (LIFETIME GUARANTEE)
- Valves: Dynamic Speed Valve + Intelligent Frame Relief Valve.

Also Includes...

- Tinted Windows.
- **Pheonix mesh.** Doors.
- Plain Zip-In Curtains.
- Heavy Duty PVC Draught Exclusion.
- Draught Skirt
- Endurance Storm Straps

Model	Width	Depth	Height	Weight	Pack Size
Elan 280	280cm	280cm	235-250cm	20.6kg	76x32x35cm

Colours - Graphite / Ivory

Optional Extras:

- Elan 280 Lounge Liner (OR17302)
- Elan Canopy (OR17312)
- Elan 280 Air-Walk Matting (OR17307)
- Signature Treadlite (TRE17300)
- Rear Pad Poles (POL220)
- Jet Stream Electric Pump (OR16015)
- Jet Stream Electric Twin Pump - (OR17040)

Elan 340

600^{HD}

AIR PORCH AWNING // CARAVAN

“Simplicity, quality and elegance at its finest”

Features:

- Fabric: **600^{HD}**
- Frame: Single Oxygen Air-Frame Tube + Single Velcro In-Roof Support Tube (LIFETIME GUARANTEE)
- Valves: Dynamic Speed Valve + Intelligent Frame Relief Valve.

Also Includes...

- Tinted Windows.
- **Pheonix mesh.** Doors.
- Plain Zip-In Curtains.
- Heavy Duty PVC Draught Exclusion.
- Draught Skirt
- Endurance Storm Straps

Model	Width	Depth	Height	Weight	Pack Size
Elan 340	340cm	280cm	235-250cm	22.2kg	78x36x36cm

Colours - Graphite / Ivory

Optional Extras:

- Elan 340 Lounge Liner (OR17311)
- Elan Canopy (OR17312)
- Elan 340 Air-Walk Matting (OR17314)
- Signature Treadlite (TRE17310)
- Rear Pad Poles (POL220)
- Jet Stream Electric Pump (OR16015)
- Jet Stream Electric Twin Pump - (OR17040)

16-17

OUTDOOR

REVOLUTION

WWW.OUTDOOR-REVOLUTION.COM

OXYGEN

AIR FRAME

More info at www.outdoor-revolution.com

OXYGEN

AIR FRAME

NEW
FOR 2017

Europa ...the versatile choice



...adapting to your needs

Europa caravan air awning in three fabric options...

The all-new air framed Outdoor Revolution Europa, introduces innovative and revolutionary designs with incredible versatility in to the awning market; the front door can be zipped out and moved backwards to create an extremely useful porch area, or moved forward to instantly provide maximum living space. At 3.8m wide this awning offers outstanding capacity and will fit all modern caravans.



Europa 380 Pro

The inflation system on the Europa combines the Dynamic Speed Valve; the easiest and most effective valve on the market with our exclusive pressure relief valve to create an Intelligent Frame. The Dynamic Speed Valve ensures the fastest inflation/deflation of any awning on the market and the relief valve prevents damage to the air frame through over inflation or air expansion in hotter climates without compromising the strength, shape or performance of the awning. The Europa can accommodate a zip on tall annexe on either side which creates fantastic sleeping or additional storage space whilst the tall annexe comes complete with micro polyester bedroom inner tent.



Europa 380



Europa 380 Climate

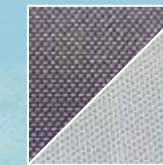
Pro. 800^{HD}



The Europa 380 pro utilises our premium 800 High Density yarn dyed woven fabric to give you our most luxurious, high performing awning ever.

An unequalled premium fabric in every aspect in terms of looks, feel and technical performance.

600^{HD}



The Europa 380 utilises our 600 High Density Oxford weave fabric to provide the feel of a traditional canvas awning whilst maintaining all the benefits of Outdoor Revolution's signature lightweight awnings.

The most outstanding, modern, technically advanced fabric; uncompromised in every way.

Pro.Climate.



The Europa Pro Climate utilises our pioneering Climate high performing man made polyester fabric which has the breathability of polycotton whilst retaining all the benefits of a lightweight water repellant high performance fabric.

Europa 380 PRO

Pro.800^{HD}



PREMIUM AIR AWNING // CARAVAN

“A revolutionary new concept that will change the face of Caravanning”

Features:

- Fabric: **Pro.800^{HD}**
- Frame: Two Oxygen Air-Frame Tubes + 3 Velcro In-Roof Support Tubes (LIFETIME GUARANTEE)
- Valves: Dynamic Speed Valve + Intelligent Frame Relief Valve.

Also Includes...

- Tinted Windows.
- **Pheonix mesh.** Doors.
- Plain Zip-In Curtains.
- Moveable Windowed Vario Front Door.
- Heavy Duty PVC Draught Exclusion.
- Includes Draught Skirt + Two Reflective Endurance Storm Straps.



Model	Width	Depth	Height	Weight	Pack Size
Europa 380 ^{PRO}	380cm	360cm	235-250cm	34.6kg	78x44x44cm

Colours - Anthracite / Platinum Grey

Optional Extras:

- Europa Air-Walk Matting (OR17389)
- Signature Treadlite (TRE17370)
- Europa Lounge Liner (OR17364)
- Europa Pro Tall Annexe (OR17374)
- Zip in Mesh Door (OR17387)
- Rear Pad Poles (POL220)
- Jet Stream Electric Pump (OR16015)
- Jet Stream Electric Twin Pump (OR17040)



Europa 380

600^{HD}



AIR AWNING // CARAVAN

“The most functional and adaptable caravan awning available”

Features:

- Fabric: **600^{HD}**
- Frame: Two Oxygen Air-Frame Tubes + 3 Velcro In-Roof Support Tubes (LIFETIME GUARANTEE)
- Valves: Dynamic Speed Valve + Intelligent Frame Relief Valve.

Also Includes...

- Tinted Windows.
- **Pheonix mesh.** Doors.
- Plain Zip-In Curtains.
- Moveable Windowed Vario Front Door.
- Heavy Duty PVC Draught Exclusion.
- Includes Draught Skirt + Two Reflective Endurance Storm Straps.



Model	Width	Depth	Height	Weight	Pack Size
Europa 380	380cm	360cm	235-250cm	32.4kg	78x44x44cm

Colours - Graphite / Ivory

Optional Extras:

- Europa Air-Walk Matting (OR17389)
- Signature Treadlite (TRE17370)
- Europa Lounge Liner (OR17364)
- Europa Annexe (OR17364)
- Zip in Mesh Door (OR17387)
- Rear Pad Poles (POL220)
- Jet Stream Electric Pump (OR16015)
- Jet Stream Electric Twin Pump (OR17040)



Europa 380 climate

Pro.Climate.



BREATHABLE AIR AWNING // CARAVAN

“Unequalled comfort with the unique breathable fabric”

Features:

- Fabric: **Pro.Climate.**
- Frame: Two Oxygen Air-Frame Tubes + 3 Velcro In-Roof Support Tubes (LIFETIME GUARANTEE)
- Valves: Dynamic Speed Valve + Intelligent Frame Relief Valve.

Also Includes...

- Tinted Windows.
- **Pheonix mesh.** Doors.
- Plain Zip-In Curtains.
- Moveable Windowed Vario Front Door.
- Heavy Duty PVC Draught Exclusion.
- Draught Skirt
- Endurance Storm Straps



Model	Width	Depth	Height	Weight	Pack Size
Europa climate	380cm	360cm	235-250cm	36.6kg	78x44x44cm

Colours - Graphite / Ivory

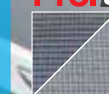


Optional Extras:

- Europa Air-Walk Matting (OR17389)
- Signature Treadlite (TRE17370)
- Europa Lounge Liner (OR17364)
- Europa Pro Climate Annexe (OR17385)
- Zip in Mesh Door (OR17387)
- Rear Pad Poles (POL220)
- Jet Stream Electric Pump (OR16015)
- Jet Stream Electric Twin Pump (OR17040)

Europa Tall Annexe

Pro.800HD



600HD



Pro.Climate.



AIR AWNING ANNEXE // CARAVAN

“An essential addition to the Europa range, giving comfortable sleep or extra storage space”

Features:

- Fabric: **600HD Pro.800HD Pro.Climate.**
- Frame: Single Oxygen Air-Frame Tube
- Valves: Dynamic Speed Valve + Intelligent Frame Relief Valve

Also Includes...

- Rear Zip- Down Air Vent
- Cool Grey Micro Polyester Inner Tent



Model	Width	Depth	Height	Weight	Pack Size
Europa pro	200cm	225cm	180cm	10.2kg	73x24x24cm

Colours - Anthracite / Platinum Grey



Europa 380	200cm	225cm	180cm	11.5kg	73x24x24cm
Europa climate	200cm	225cm	180cm	10.2kg	73x24x24cm

Colours - Graphite / Ivory



Optional Extras:

- Trio Sleeping Bag (OR17055)
- Trio Twin Sleeping Bag (OR17050)
- Trio Tots Sleeping Bag (OR17058)
- Trio Pillow (OR15014)





SPORT-AIR ...single inflation

....The quickest inflation awning on the market!

SPORT-AIR caravan air awning in two size options...

Following the success of the Sport Air 325 Single inflation awning in 2016, we have introduced a 4 metre version; classic Outdoor Revolution styling, lightweight, but incredibly strong 150HD double Ripstop fabric, makes this the awning of choice where weight, space and speed of pitching are prerequisites from the end user.



SPORT-AIR 325

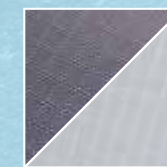
Upgraded version of the 2016 model with the addition of a secondary valve to make deflation even quicker.



SPORT-AIR 400

The 'big brother', allowing more space for families. Just like with the 325, an annexe can be fitted on either or both sides.

150^{HD} drs **Endurance.**



The Sport Air 325 and 400 both use our 150 High Density fabric to give unparalleled benefits in terms of strength to volume and weight. The engineered double rip-stop gives a contemporary look and feel, as well as providing the user with unequalled performance above similar weight fabrics.

Dura-tech.

Welded frame technology - A durable weld joined frame system and low diameter high pressure tubes makes this awning the fastest and the most reliable on the market to inflate.

SPORT-AIR 325

150^{HD} drs **Endurance.**



CANVAS ONLY WEIGHT
14.1kg

“The lightest and quickest Outdoor Revolution awning”

- Features:
- Fabric: **150^{HD} drs Endurance.**
 - Frame: **Dura-tech.** welded with Single Inflation Point Tube. (3 YEAR TUBE WARRANTY)
 - Valves: 2 Dynamic Speed Valves + Intelligent Frame Relief Valve.

- Also Includes...
- Tinted Windows.
 - Embossed Zip-In Curtains.
 - **Pheonix mesh.** Doors.
 - Heavy Duty PVC Draught Exclusion.
 - Draught Skirt
 - Endurance Storm Straps



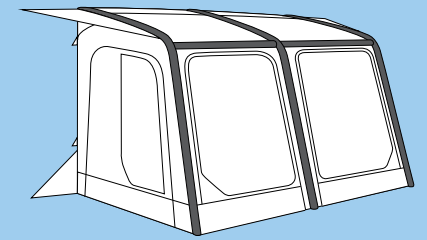
Model	Width	Depth	Height	Weight	Pack Size
Sport-Air 325	325cm	250cm	235-250cm	17.9kg	76x30x36cm

Colours - Graphite / Warm Grey ☒ ☐

Optional Extras:

- Signature Treadlite (TRE300B)
- Air-Walk Matting (OR17202)
- Sport-Air Annexe (OR17208)
- Sport-Air 325 Tube Kit (OR16207)
- Rear Pad Poles (POL220)
- Jet Stream Electric Pump (OR16015)
- Jet Stream Electric Twin Pump (OR17040)

Dura-tech. Welded Frame



SPORT-AIR 400

150^{HD} drs **Endurance.**



NEW FOR 2017



CANVAS ONLY WEIGHT
16.7kg

“Speed, practicality, size, good looks & reliability to meet your budget...
...look no further!”

- Features:
- Fabric: **150^{HD} drs Endurance.**
 - Frame: **Dura-tech.** welded with Single Inflation Point Tube. (3 YEAR TUBE WARRANTY)
 - Valves: 2 Dynamic Speed Valves + Intelligent Frame Relief Valve.

- Also Includes...
- Tinted Windows.
 - Embossed Zip-In Curtains.
 - **Pheonix mesh.** Doors.
 - Heavy Duty PVC Draught Exclusion.
 - Draught Skirt
 - Endurance Storm Straps



Model	Width	Depth	Height	Weight	Pack Size
Sport-Air 400	400cm	250cm	235-250cm	20.6kg	76x32x38cm

Colours - Graphite / Warm Grey ☒ ☐

Optional Extras:

- Signature Treadlite (TRE400B)
- Air-Walk Matting (OR17207)
- Sport-Air Annexe (OR17208)
- Sport-Air 400 Tube Kit (OR17206)
- Rear Pad Poles (POL220)
- Jet Stream Electric Pump (OR16015)
- Jet Stream Electric Twin Pump (OR17040)



SPORT-AIR ANNEXE



Features:

- Fabric: **150^{HD} drs Endurance.**
- Frame: Single Oxygen Air-Frame Tube.
- Valves: Dynamic Speed Valve + Intelligent Frame Relief Valve

Also Includes...

- Integral Sewn-In Groundsheet
- Cool Grey Micro Polyester Inner Tent
- Rear Ventilation Points.



Model	Width	Depth	Weight	Pack Size
Sport-Air Annexe	235cm	200cm	6.0kg	73x18x22cm

Optional Extras:

- Trio Sleeping Bag (OR15000)
- Trio Twin Sleeping Bag (OR15005)
- Trio Tots Sleeping Bag (OR15010)
- Trio Pillow (OR15014)

ACCESSORIES ...

FURNITURE



WINDBREAKS



SLEEPING BAGS



FLOORING



PEGS + VALLETS



INFLATION



SANITATION



CARAVAN CARE



Daisy Pegs

NEW



Daisy Awning & Tent Pegs...
...You've simply got to get some!

Novelty tent & awning pegs with peg cleaner.
 Assorted mix & match multicoloured flower heads.

GET YOURS PICKED QUICKLY...
...WE CAN'T GROW 'EM' FAST ENOUGH!!!



Available in all good retailers...



More info at www.outdoor-revolution.com

SAN REMO CHAIR



The **San Remo Chair** is a suspension chair with numerous adjustable back settings from upright to laying nearly flat. This chair includes a free clip on, side cup holder table.

Matt Graphite Aluminium Frame
Adjustable Back
600D PVC padded Fabric
Free Compact Side Table

Open Size: 118cm x 62cm x 74cm
Folding Size: 111cm x 62cm x 9cm
Total Weight: 5.2kg
Maximum Capacity: 120kg
Optional Extra: Footstool

NAPOLI CHAIR



The **Napoli Chair** is a dark grey adjustable back chair and comes with a moveable head rest that slides up and down to be placed in the most comfortable position for your comfort.

Matt Graphite Aluminium Frame
Adjustable Back
600D PVC padded Fabric
Free Compact Side Table

Size: 47cm x 42cm x 46cm
Weight loading: 100kg
Optional Extra: Footstool

SORRENTO LOUNGER



The **Sorrento Lounger** is an adjustable reclining lounging chair with various positions to provide the most comfortable and relaxing position for you. It folds up flat to make it easier for storage when not in use.

Graphite Steel Frame
Adjustable Back and Legs
600D PVC padded Fabric

Free Compact Side Table
Size: 53cm x 50cm x 51cm
Weight loading: 100kgs

CLIP ON FOOT STOOL



The **Clip on Footstool** is designed to fit the San Remo and Napoli chair, complementing the Outdoor Revolution furniture range. The footstool offers extra comfort for those days when you just want to kick back and relax.

Matt Graphite Aluminium Frame
600D PVC padded Fabric
Fits Napoli and San Remo Chairs

Size: 90cm x 48cm x 31cm
Weight loading: 30Kgs

PREMIUM TABLE



The **Premium Table** has been designed to complement the range of Outdoor Revolution furniture. The Wood Grain Surface gives the table a contemporary look. The legs fold completely flat, making the table very easy to store.

Aluminium Legs with Matt Finnish
Size: 90cm x 60cm x 72cm

Folding size: 90cm x 60cm x 10cm
Size: 87cm x 50cm x 80cm

FOLD IN HALF TABLE



The **Lifetime Fold in Half Table** is the perfect high quality camping table that you have always wanted. It has a heavy duty table top made from high density polyethylene, with heavy gauge steel tubular adjustable height legs. The table folds in half for easy storage and transportation & features a convenient webbing handle, complete with a carry, storage bag.

Dimensions unfolded: 122cm x 61cm
Steel tube: 25mm diameter.
Adjustable height: 46/74/91cm
Net weight: 9.3kg



TRIO SLEEPING BAGS + TRIO PILLOW



The ever popular **Trio Sleeping Bag** range is designed to compliment products specific to the Outdoor Revolution range of awnings, driveways and tents. These premium quality sleeping bags have a soft micro polyester finish and are 2 x 175grm m2 in thickness. The Sleeping Bag has a pillow envelope to fit a matching pillow in.

Available in 3 sizes:
Double - 235cm x 170cm
Single - 235cm x 100cm. (Two bags can be zipped together to create a double)
Tots Infant - 130cm x 70cm

The **Trio Pillow** is a camping pillow specifically designed to match the trio stripe on the sleeping bags. The pillow comes in a small compact bag and the pillow expands when out of the bag. It slots in to the pillow slot on the Trio Sleeping Bag range. It comes in both an adult size version and a junior size version.



TRIO TABLE CLOTH



The **Trio Stripe Table Cloth** is designed to coordinate perfectly with the Trio Stripe range of camping accessories, awning and tent products. It comes in its own compact pouch bag with draw string for storage convenience.

Fabric - Machine washable Micro Polyester
Size - 150cm x 80cm



TECH PEGS



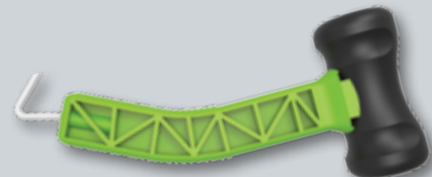
The **TECH-PEG** is a technical tent peg, designed with a tough double sided peg head for holding guy lines and pegging down points safely and securely. The twisted nail shaft helps to achieve better grip and easier insertion into awkward ground. Sold conveniently in their own durable storage box with integrated peg cleaner in the box lid for cleaning dirty pegs before putting them away.

STORM KIT



The **DELUXE STORM KIT** incorporates all you need to secure your awning or tent in awkward, stormy conditions. The kit includes 15 Tech-Pegs for easy pegging and firm hold, 2 adjustable Endurance Storm Straps and a cleverly designed, curved handled mallet, ergonomically designed to aid when placing pegs at awkward angles.

ANGLE MALLET



The **ANGLE MALLET** is cleverly designed to help place pegs into the ground at the correct angle. The weighted mallet head makes light work of placing pegs into hard ground. Incorporating a handy peg puller at the end of the handle.



MULTI MALLET



The **MULTI MALLET** is a technical mallet with multi functional features that make it a 'must have' camping accessory for everyone. Incorporating an extending peg puller to help prevent back ache caused by bending over when extracting pegs. This conveniently retracts back into the lightweight alloy handle when not in use. A convenient brush peg cleaner can be accessed to clean up those dirty pegs before putting them away. A weighted rubber mallet head makes light work of knocking pegs into hard ground.

Available in all good retailers...

More info at www.outdoor-revolution.com

JET-STREAM

COMPACT HIGH PRESSURE AIR PUMP



JET-STREAM TWIN

COMPACT HIGH PRESSURE TWIN TURBO AIR PUMP

TWIN
TURBO



12V ELECTRIC PUMPS DESIGNED SPECIFICALLY FOR THE SPEEDY & EFFORTLESS INFLATION OF MODERN AIR AWNINGS & TENTS...

- POWERFUL INTERNAL HIGH PRESSURE PUMP
- ADJUSTABLE PRE-SET PSI AUTO CUT OFF FEATURE
- DIGITAL LCD SCREEN READOUT INDICATOR
- CAN BE SET TO INFLATE TO A MAXIMUM OF 8 PSI
- INTERNAL 5M CABLE TIDY REEL
- SECURE 12V PLUG HOUSING CLIP
- INCLUDES A HANDY CARRY/STORAGE BAG
- COMPACT SPACE SAVING DESIGN
- INCLUDES AIR HOSE & VALVE ADAPTORS
- ERGONOMIC CARRY HANDLE

- POWERFUL TWIN INTERNAL HIGH PRESSURE PUMPS
- USB CHARGING POINT FOR PHONES & TABLETS
- ADJUSTABLE PRE-SET PSI AUTO CUT OFF FEATURE
- DIGITAL LCD SCREEN READOUT INDICATOR
- CAN BE SET TO INFLATE TO A MAXIMUM OF 8 PSI
- INTERNAL WIND IN 5M CABLE TIDY REEL
- SECURE 12V PLUG HOUSING CLIP
- INCLUDES A HANDY CARRY/STORAGE BAG
- INCLUDES AIR HOSE & VALVE ADAPTORS
- ERGONOMIC CARRY HANDLE

TWIN PUMP DESIGN
70% FASTER
NEW



The Outdoor Revolution Double Action Air Pump is designed for the fast inflation of your Air Frame Awning, Tent, inflatable boat. etc...

Incorporating an automatic switch from double to single action when the pressure exceeds 400 mBAR (5.8 PSI). Suitable to inflate Outdoor Revolution Oxygen Air Frame awnings and tents, rubber boats. Capacity: Max 4,000 cc – max pressure 800 mBAR (11.6 PSI).



LITEWEAVE

The **Liteweave Luxury Camping Carpet** is a premium quality awning and camping carpet. Fully breathable and flame retardant, Liteweave is an extremely well made, high quality product with hemmed seams and heavy duty eyelets.

- Available in a full range of sizes
- Fully breathable
- UV resistant, rot proof & flame retardant
- Tough & Jet washable
- Fully eyeleted
- Allowed on all sites
- Comes in a handy carry bag



TREAD-LITE

The **Treadlite Camping Carpet** is a fully breathable and flame retardant premium camping carpet. Treadlite is rot proof, fully breathable, UV resistant, difficult to damage, low cost and allowed on all camp sites.

- Available in a full range of sizes
- Allows grass to breath
- Stops insects coming through
- Rot proof, washable, flame retardant & UV resistant
- None-slip and easy to clean, close weave.
- Fully hemmed with large eyelets
- Strong & breathable

SALSA WINDBREAK



The **Salsa Windbreak** is a stylish wooden pole windbreak which incorporates piping at each end to attach to the side caravan rail. Multiple windbreaks can be connected together with figure of '8' connectors.

Material: 68HD Polyester
Poles: Wooden with steel tops and tips
Colour: Ivory/Graphite - trio strip trim
Size: 500cm x 140cm



SAMBA WINDBREAK



The **Samba Windbreak** is a wooden pole windbreak with PVC hi-vis windows. It has piping at each end to attach to the caravan side rail. Multiple windbreaks can be connected together with figure of '8' connectors.

Material: 68HD Polyester
Poles: Wooden with steel tops and tips
Colour: Ivory/Graphite - trio strip trim
Size: 500cm x 140cm



TANGO WINDBREAK



The **Tango Windbreak** is a premium quality wooden poll windbreak. It has piping at each end to attach to the caravan side rail. Multiple winbreaks can be connected together with figure of '8' connectors.

Material: 600HD Polyester
Poles: Wooden with steel tops and tips
Colour: Ivory with reflective strip
Size: 500cm x 140cm



VISION WINDBREAK



The **Ozone Windbreak** is a luxury windbreak designed to compliment the whole range of Outdoor Revolution products. Special features include 2 tinted window panels.

Material: 150D Polyester Oxford PU Coated
Poles & Pegs: Steel
Colour: Ivory/Graphite
Size: 500cm x 140cm
Net Weight: 4.4kg (approx)

O-ZONE WINDBREAK



The **Vision Windbreak** is a luxury coordinating windbreak that comes with an awning channel to fix to your caravans awning rail and packs into a small holdall.

Material: 150D Double Ripstop Polyester
Poles & Pegs: Steel
Colour: Ivory/Graphite
Size: 500cm x 140cm
Net Weight: 3.65kg (approx)

ECLIPSE WINDBREAK



Eclipse Windbreak; a stylish and practical windbreak. Ideal for use on the beach and in sports, for instance surfing and cycling; lightweight and shaped perfectly to protect people when sun bathing and sitting down.

Material: 68D Polyester
Poles & Pegs: Fibreglass pole, steel pegs
Colours: Lime Green, Chilli
Size: 120cm high

CARAVAN COVERS



All weather protection

Caravan Covers

Protection for your caravan against the elements of nature...

Bird Mess



Wind & Rain



Dust & Smog



Snow & Ice



UV Rays



Leaves & Sap



Fully breathable & water resistant caravan cover allows condensation to evaporate.

Fully UV stable to protect your caravan from the sun's rays & decal fading.

Elasticated hem to help keep dirt and dust out when fitted.

Nylon straps for a tight & secure fitting cover.

Complete with 2 zips for easy access.

Ideal for all year around storage.

Complete with instructions.

Storage bag included.

Available in the following sizes:



THE BIG LOO



THE BIG LOO

... IT'S IN THE CAN

Big Loo Portable Toilet is a convenient no fuss portable toilet bucket with a removable lidded seat and robust carry handle.

The perfect convenience for those little trips in the night. Available in 'hi-vis, no miss' lime green or 'discrete' grey.

Available in all good retailers...

More info at www.outdoor-revolution.com



NEW



...liquid perfection

sanitation solutions for...

TRIPLE PACK BOX = 1 ltr New Bloo Toilet Fluid,
1 ltr Bowl Cleaner plus Envirosoft Twin PackBIG VALUE TRIPLE PACK = 2 ltr Toilet Fluid,
2 ltr Bowl Cleaner & twin pack Envirosoft

POWER PEGS

Robust Power Pegs, ideal for use on hard and stony ground. Cost effective tough pegs to ensure secure pitching into the hardest of ground.

Screw Pegs

Ideal for use in hard & shaley ground. More solid & robust than standard pegs & designed for easier pegging.

Hard Ground Pegs

Hard ground pegs will glide through the toughest ground. A no nonsense way to ensure secure pitching in the hardest of ground.

Glow Pro

A heavy duty steel peg that glows in the dark and helps prevent accidents by tripping over pegs at night.

Pile Driver Pro

Thick, heavy duty steel peg with corkscrewed shaft for extra grip in hard, stony ground.

Toilet Fluid

A concentrated toilet fluid that works in unison with Blue Diamond Bowl cleaner, breaking down waste & creating a pleasant smell in the loo.
In 1, 2 & 4 ltr bottles

Bowl Cleaner

Add to your top tank to ensure that when you flush, your toilet is cleaned and refreshed. Works in unison with Blue Diamonds Toilet Fluid
In 1 & 2 ltr bottles.

Caravan Cleaner

An exceptionally fast acting formula designed to remove grease, grime and stubborn traffic film from caravans and keep your caravan sparkling.

Grey Water Cleaner

Specifically designed to clean waste pipes and water tanks in Caravans, Motorhomes and Boats, sanitising and deodorising to leave a lasting fresh fragrance.

Re-Proofer

Specifically formulated to penetrate deep in to the fabric of any canvas, nylon, acrylic or polyester to revitalise and protect the fabric.

Awning Cleaner

Specifically designed to remove dirt, bird droppings and other stains from acrylic, polyester and nylon awnings and tents.

Black Streak Remover

Blue Diamond Black Streak Remover is extremely effective in removing black streaks and traffic film from caravans, motorhomes and boats.

Acrylic Glass Cleaner

A special formulation designed to clean caravan, motorhome and marine windows. Also suitable for mirrors, tiles and chrome surfaces.

The Blue Diamond Nature Calls Portable Toilet

offers perfect hygiene away from home as well as high quality construction and easy to use. The compact dimensions make this unit very easy to keep clean. The top part (15 Litres) and base part (20 litres) are connected using practical and robust plastic clips. The base part also has a very sturdy handle for convenient transport and disposal of waste water. Best of all, this neat toilet also has a toilet roll holder incorporated into the design giving you somewhere to store the roll other than on the floor, thus keeping it clean and dry.

BIG VALUE!

Promotional Packs of Bowl Cleaner, Toilet Fluid & Toilet Tissue in handy reusable containers.



Enviro-Soft Toilet Tissue
Is a quick dissolving toilet tissue especially designed for use in all leisure toilets.





Family Tents - 2017 Catalogue

**OUTDOOR
REVOLUTION**
WWW.OUTDOOR-REVOLUTION.COM

Outdoor Revolution,
Unit 1 Brick Park,
Bretton Court,
Bretton Street Industrial Estate,
Dewsbury,
West Yorkshire,
WF12 9BY

Web: www.outdoor-revolution.com

Email: cs@blue-diamond-products.co.uk

Tel: 01924 455313
Fax: 01924 450551



Driveaway Awnings - 2017 Catalogue

OXYGEN
AIR FRAME



Outdoor Revolution also produce a range of inflatable family tents & driveaway awnings... with DSV & IF technology. Ask your dealer or see online for details - www.outdoor-revolution.com

Distributed by:

***LIFETIME GUARANTEE** - Terms & Conditions Apply. See website for details.

Please note : In the interest of continuous product development & improvements by Outdoor Revolution; some products & specifications may vary slightly from the photographs & information given within this brochure.

Dimensions & weights are approximate and are intended as a guide only.

